

FOCOLARE



STOSA
CUCINE

UN PATRIMONIO
DI MEMORIA E FUTURO
/ A HERITAGE
OF MEMORY AND FUTURE

Qualità, tradizione e forza nel prezzo: sono questi gli ingredienti, che sapientemente dosati, hanno permesso a Stosa Cucine di mettere a punto la "ricetta giusta" per ottenere un prodotto eccellente e conquistare un'importante primato nel mercato. **Qualità**, non significa solo bontà del prodotto, per Stosa Cucine è anche il risultato di un'approfondita ricerca nel design, nella tecnologica e nell'ampliamento della gamma dei modelli, sostenuta da costanti investimenti produttivi. Per un miglioramento continuo. **Forza nel prezzo:** ovvero costruire cucine garantendo il miglior rapporto qualità/prezzo. Ad un prodotto pregiato corrisponde una spesa accessibile. **Tradizione:** da oltre quarant'anni dietro ad ogni modello Stosa Cucine vi sono tutta la passione e la genuinità di una famiglia, quella del presidente Maurizio Sani che, assieme ai figli David, Mauro e Leonardo, guida con successo l'azienda verso promettenti orizzonti.

Quality, tradition and strength in the price: these are the ingredients which, carefully dosed, have enabled Stosa Cucine to prepare the "right recipe" for obtaining an excellent product and achieving an important lead in the market.

Quality doesn't only mean goodness of the product. For Stosa Cucine it is also the result of in-depth research in the design, technology and in widening the range of models, backed by ongoing productive investments. For ongoing improvement. **Strength in the price:** i.e. making kitchens and guaranteeing the best value for money. A quality product at an affordable price. for over 40 years, behind every Stosa Cucine model there has always been all the passion and genuineness of a family, and namely that of chairman Maurizio Sani who, together with his children David, Mauro and Leonardo, successfully leads the company towards promising horizons.



Maurizio Sani
Presidente di Stosa Cucine

Maurizio Sani

Shabby & Chic Focolare



Uno stile unico e inconfondibile per creare intorno a voi la cucina che rispecchia ogni vostro desiderio, dove la bellezza esteriore si coniuga alla praticità richiesta dai gesti quotidiani che diventano ritualità tranquillizzante. Le grandi superfici materiche in primo piano e le ispirazioni stilistiche di gusto retrò creano un design esclusivo, in armonia con il trascorrere del tempo all'interno di nicchie di natura amica.

A unique and unmistakable style to surround yourself with a kitchen that reflects your every desire, where outer beauty is combined with the practicality required by everyday gestures that become soothing rituals. The large material surfaces in the foreground and the stylistic inspirations of this retro style create a unique design, in harmony with the passage of time in cosy corners.



Colori & profumi



Colori tenui per esaltare il fascino di atmosfere campestri, dense di profumi estivi catturati in mazzi floreali da essiccare nei granai e conservare nei cassetti di biancheria. La cucina Focolare rivive il fascino di una vita fatta di semplicità e recupero di tradizioni familiari, giocando sulla forza di energie materiche che sfidano i segni del tempo e delle mode. Le sfumature decor disegnano grafismi eleganti, per una cucina in versione old fashion.

Soft colours to bring out the charm of rural atmospheres, full of summer scents captured in floral bouquets to dry out in barns and keep in the linen drawers. The Focolare kitchen recalls the charm of a life of simplicity and family traditions, playing on the strength of material energy that defies time and fashion. The décor nuances outline elegant graphic elements for an old-fashioned look kitchen.



Alla ricerca di atmosfere naturali

La linea compatta della cucina Focolare sottolinea la robustezza materica del legno. L'anta piena in castagno naturale esalta la solidità strutturale e rimanda all'equilibrio tra uomo e natura, in una rivisitazione contemporanea di quell'atavica armonia che crea da sempre serenità interiore. La fiamma del castagno disegna sfumature delicate, richiamando negli interni della casa il caleidoscopio multicolore dei boschi mediterranei.

IN SEARCH OF NATURAL ATMOSPHERES

The compact lines of the Focolare kitchen underline the material robustness of the wood. The solid natural chestnut doors enhance the structural solidity and are reminiscent of the equilibrium between man and nature, in a contemporary version of that ancestral harmony that has always created inner peace. The flame of the chestnut draws delicate nuances, recalling in the home interior the multicoloured kaleidoscope of Mediterranean forests.





La rassicurante performance della soluzione lineare è movimentata dalla penisola che organizza spazi frugali per snack e colazioni. I riflettori del design puntano su dettagli che diventano importanti, come la cappa in muratura, con profili in legno di castagno naturale o il mastello mignon colmo di bocci di rosa essiccati, eco di atmosfere romantiche tornate in auge.

The reassuring performance of the linear solution is broken by the peninsula providing frugal spaces for snacks and breakfasts. The design highlights details that become important, such as the masonry hood, with natural chestnut profiles or the tiny tub filled with dried rose buds, echoing romantic atmosphere back in vogue.

Shabby & Chic

9





Colori soft touch

Le ante a vetro conferiscono al total look un respiro arioso e un tocco neoromantico, grazie alla formella dipinta con spighe di grano. La natura è protagonista anche negli interni domestici, con gli evidenti richiami di colore luminoso, di materia vera e iconografie campestri. L'accento cromatico monocorde dà adito ad atmosfere chic che fanno subito tendenza. La cura del particolare che caratterizza gli elementi della cucina Focolare è evidente in ogni dettaglio.

SOFT TOUCH COLOURS. The glass doors make the overall look airy and provide a touch of neo-Romanticism, thanks to the tile painted with wheat ears. Nature is protagonist also in home interiors, with clear touches of bright colours, true material and rural iconography. The predominantly monotone colour creates chic atmospheres that are immediately trendy. The attention to detail is evident in every element of the Focolare kitchen.



Country & Chic



Le tracce lasciate dal tempo sottolineano il fascino vissuto di questa cucina, esaltandone il carattere gioiale. La zona cottura in muratura, concepita come isola, richiama alla memoria la centralità degli antichi focolari domestici. Si completa di fuochi e forno ed è sormontata dal suggestivo trabattello in castagno. Il top dal forte spessore riecheggia lo stile di un arredamento quasi rustico, ma di estrema eleganza.

The traces left by time underline the lived-in charm of this kitchen, enhancing its jovial character. The cooking area in masonry, conceived as an island, recalls the centrality of ancient hearths. It is complete with hobs and oven and topped by an impressive chestnut trabattello. The thick top echoes the style of almost rustic but extremely elegant furniture.







La finitura noce anticato suggerisce atmosfere calde, dove l'autenticità dei valori umani incontra le essenze materiche della natura. L'isola centrale si propone come centro di gravità funzionale, col grande top che organizza un'ampia superficie per la preparazione dei cibi. Le ante a vetro si alternano alle ante piene, che a loro volta incontrano le ante a nido d'ape nella soluzione della base sottolavello. Le maniglie in bronzo richiamano i materiali di riciclo tipici dello stile country chic.

The antique walnut finish suggests warm atmospheres, where the authenticity of human values meets the material forms of nature. The central island is the functional centre of gravity, with a large top providing ample space for food preparation. Glass doors alternate with solid doors, which in turn meet the honeycomb doors in the solution with the under sink base. The bronze handles are reminiscent of recycled materials typical of chic country style.





Lato romantico

Elementi dal gusto vissuto diventano protagonisti di rilievo nella globalità dell'arredo cucina, come la credenza con mensole a giorno e vetrina tre ante o il tavolo da lavoro completo di cassetti di ispirazione rurale. Le orme di un passato carico di emotività si manifestano nel design di uno stile già visto, ma reinventato secondo canoni moderni, che privilegia ergonomia e funzionalità.

THE ROMANTIC SIDE. Elements with a lived-in appearance become the focal point in the overall kitchen furnishing, such as the dresser with open shelves and three-door glass cabinet or the work top complete with rural-inspired drawers. Signs of a past full of emotion are evident in the design of a déjà-vu style, revisited according to modern tastes, focussing on ergonomics and functionality.

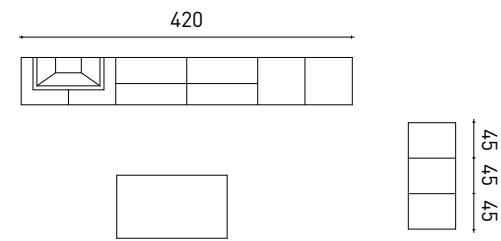


PROPOSTE COMPOSITE / COMPOSITION IDEAS

Composizione / Composition 01



- Finitura Castagno naturale
- Maniglia M55B
- Top laminato Caribe bianco
- Natural chestnut finish
- Handle M55B
- Caribe white laminate top

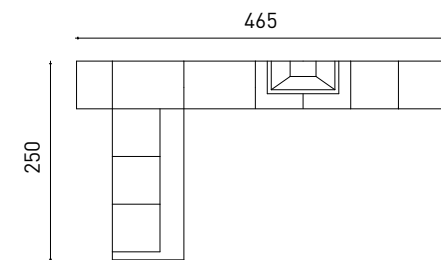


Page: 06-07

Composizione / Composition 02



- Finitura Castagno naturale
- Maniglia M55B
- Top laminato Sahara
- Sedia legno S03
- Tavolo allungabile
- Natural chestnut finish
- Handle M55B
- Sahara lamiante top
- Wooden chair S03
- Extensible table

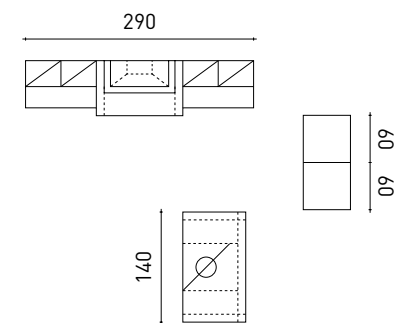


Page: 10-11

Composizione / Composition 03



- Finitura Castagno naturale
- Maniglia M55B
- Top Pietra del Carso levigato
- Sedia legno S03
- Natural chestnut finish
- Handle M55B
- Pietra del Carso smoothed
- Wooden chair S03



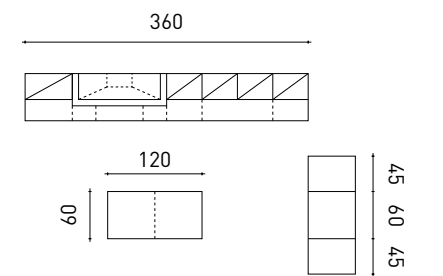
Page: 16-17

PROPOSTE COMPOSITE / COMPOSITION IDEAS

Composizione / Composition 04



- Finitura noce anticato
- Maniglia M55C
- Top marmo Arabescato
- Antiqued walnut finish
- Handle M55C
- Arabescato marble top

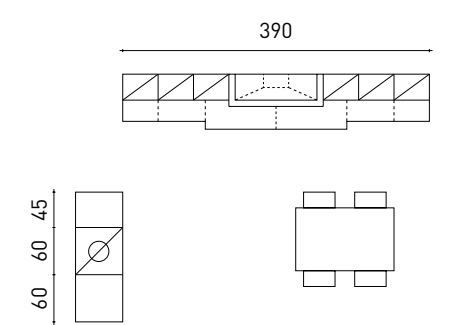


Page: 20-21

Composizione / Composition 05



- Finitura noce anticato
- Maniglia M55C
- Top Marmo Arabescato
- Sedia legno S03
- Antiqued walnut finish
- Handle M55C
- Arabescato marble top
- Wooden chair S03

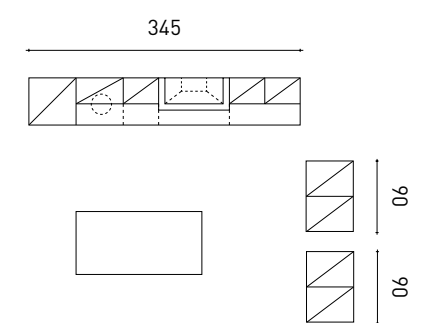


Page: 22-23

Composizione / Composition 06



- Finitura noce anticato
- Maniglia M55C
- Top laminato Sahara
- Sedia legno S03
- Antiqued walnut finish
- Handle M55C
- Laminate Sahara top
- Wooden chair S03



Page: 24-25



TAVOLI & SEDIE / TABLES AND CHAIRS



Tavolo allungabile con piano laminato H.78
Extensible table with laminate top H.78



Tavolo allungabile con piano legno H.78
Extensible table with wooden top H.78

Tavolo fratino allungabile H.77
Extensible refectory table H.77



Sedia impagliata
Chair with straw seat

TIPOLOGIA STRUTTURA / STRUCTURES TYPES

STRUTTURA CASTAGNO / CHESTNUT STRUCTURE



Fianchi strutturali laminati o impiallacciati sp. 18 mm finiti nei bordi frontali, superiori, inferiori più lato esterno a vista, fianchi di finitura impiallacciati optional.
Laminated or veneered structural sides thick. 18 mm finished in front, top and bottom edges plus visible exterior, with white interior.

STRUTTURA NOCE AMATI / AMATI WALNUT STRUCTURE



Fianchi strutturali laminati o impiallacciati sp. 18 mm finiti nei bordi frontali, superiori, inferiori più lato esterno a vista, fianchi di finitura impiallacciati optional.
Laminated or veneered structural sides thick. 18 mm finished in front, top and bottom edges plus visible exterior, with white interior.

MANIGLIE / HANDLES

MANIGLIA DI SERIE / STANDARD HANDLE



cod. M55
↔ 96 mm

Finitura bronzo graffiato
Scratched bronze finish

MANIGLIE OPZIONALI / OPTIONAL HANDLES



cod. M55B
↔ 96 mm

Finitura argento antico
Antique silver finish



cod. 55C
↔ 96 mm

Finitura bronzo antico
Antique bronze finish

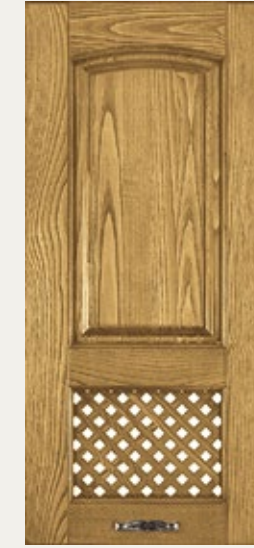


cod. M53B
↔ 96 mm

Finitura bronzo inserto ceramica bianco
Bronze finish with white ceramic insert

TIPOLOGIA ANTE / TYPES OF DOORS

TELAIO CON BUGNA IN LEGNO CASTAGNO TINTO NATURALE / WOODEN FRAME WITH NATURAL CHESTNUT RAISED PANEL



Anta nido d'ape castagno naturale
Natural chestnut honeycomb door



Anta piena castagno naturale
Natural chestnut full door

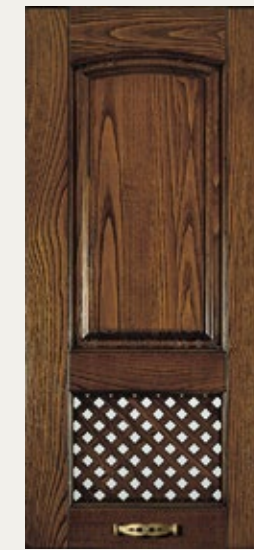


Anta vetro castagno naturale
Natural chestnut glass door



Cassetto castagno naturale
Natural chestnut drawer

TELAIO CON BUGNA IN LEGNO CASTAGNO TINTO NOCE ANTICATO / WOODEN FRAME WITH ANTIQUED WALNUT RAISED PANEL



Anta nido d'ape noce antico
Antiqued walnut honeycomb door



Anta piena noce antico
Antiqued walnut full door



Anta vetro noce antico
Antiqued walnut glass door

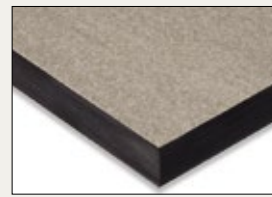


Cassetto noce antico
Antiqued walnut drawer

PIANI DI LAVORO / WORKING SURFACES

PIANI STRATIFICATI SP. 1,2 CM PARI / STRATIFIED WORKTOPS TH. 1.2 CM STRAIGHT

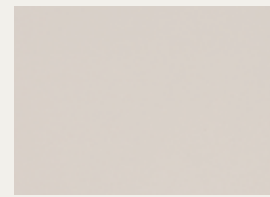
TIPOLOGIA PROFILO / PROFILE TYPE



COLORI STRATIFICATO / STRATIFIED COLORS



Lava, finitura MIKA
Lava, MIKA finish



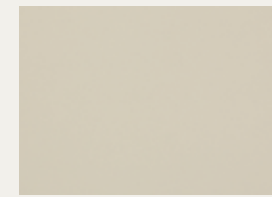
Bianco Decò, finitura ERRE
Decò White, ERRE finish



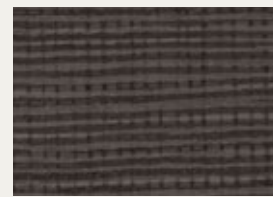
Caribe Bianco finitura MIKA
White Caribe, MIKA finish



Antracite, finitura ERRE
Anthracite, ERRE finish



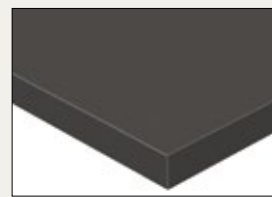
Scarlet Bianco, finitura MIKA
White Scarlet, MIKA finish



Nero, finitura LARIX
Black, LARIX finish

LAMINATO SP. 2 CM BORDO ABS / LAMINATE 2 CM THICK ABS EDGE

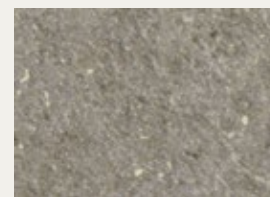
TIPOLOGIA PROFILO / PROFILE TYPE



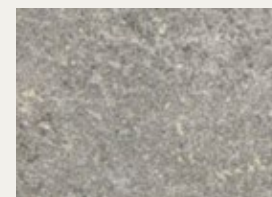
COLORI LAMINATO / LAMINATE COLORS



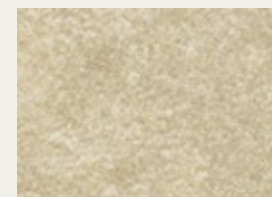
Lava 3329 porfido nero finitura MIKA
Lava 3329 black porphyry finish MIKA



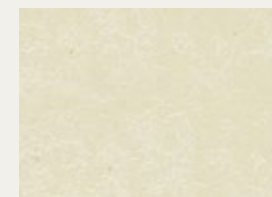
Pietra Vecchia 3324 finitura MIKA
Pietra Vecchia 3324 finish MIKA



Pietra Serena 3326 finitura CLIFF
Pietra Serena 3326 finish CLIFF



Sahara 3327 finitura CLIFF
Sahara 3327 finish CLIFF



Sabbia finitura 0201 CLIFF
Sand finish 0201 CLIFF



Caribe Bianco finitura MIKA
White Caribe MIKA finish



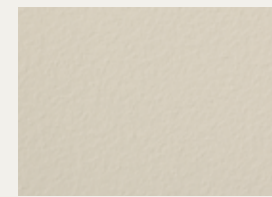
Corten Sabbia finitura MIKA
White Glitter MIKA finish



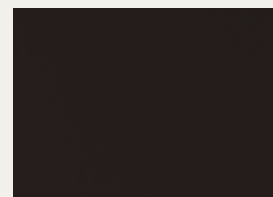
Glitter Bianco finitura MIKA
White Glitter MIKA finish



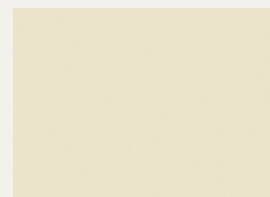
Luserna Bianco finitura LUNA
White Luserna Stone LUNA finish



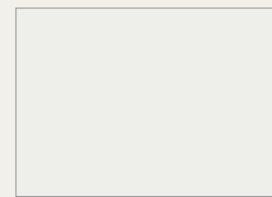
Scarlet Bianco finitura MIKA
White Scarlet MIKA finish



Caffè
Coffee



avana
Havana



Bianco Opaco
Matt White



Antracite
Anthracite



Nero finitura Pietra
Black Stone finish

PIANI DI LAVORO / WORKING SURFACES

LAMINATO SP. 4 CM. RAGGIO 2 MM. / LAMINATE 4 CM THICK, RADIUS 2 MM.

TIPOLOGIA PROFILO / PROFILE TYPE



Raggio 2 mm - 2 mm radius.

COLORI LAMINATO / LAMINATE COLORS



Lava porfido nero finitura MIKA
Lava black porphyry finish MIKA



Pietra Vecchia finitura MIKA
Pietra Vecchia 3324 finish MIKA



Pietra Serena finitura CLIFF
Pietra Serena finish CLIFF



Sahara finitura CLIFF
Sahara finish CLIFF



Sabbia finitura CLIFF
Sand finish CLIFF



Caribe Bianco finitura MIKA
White Caribe 98446 finish MIKA



Corten Sabbia 3330 finitura MIKA
Sand Corten 3330 finish MIKA



Glitter Bianco finitura MIKA
White Glitter finish MIKA



Luserna Bianco finitura LUNA
White Luserna finish LUNA



Scarlet Bianco finitura MIKA
White Scarlet finish MIKA



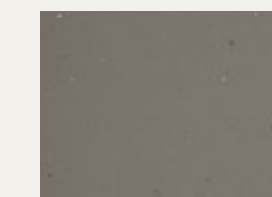
Sparkle Avana finitura OSL
Havana Sparkle OSL finish



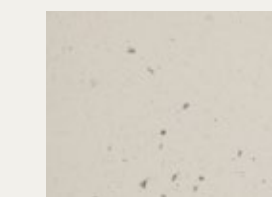
Sparkle Corda finitura OSL
Cord Grey Sparkle OSL finish



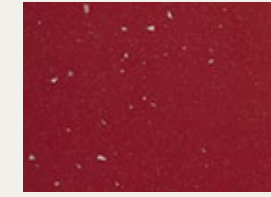
Sparkle Nero finitura OSL
Black Sparkle OSL finish



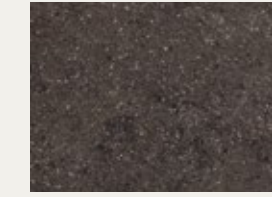
Sparkle Grigio finitura OSL
Grey Sparkle OSL finish



Sparkle Bianco finitura OSL
White Sparkle OSL finish



Sparkle Rosso finitura OSL
Red Sparkle OSL finish



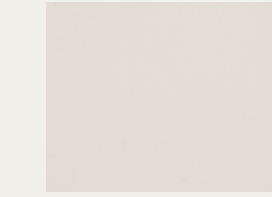
Porfido Principe finitura MIKA
Principe Porphyry MIKA finish



Stromboli finitura LUNA
Stromboli LUNA finish



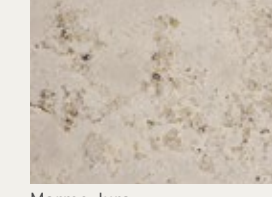
Betulla finitura FLATTING
Birch FLATTING finish



Bianco Decò finitura ERRE
Decò White ERRE finish



Marmo Canova finitura Lucido
Canova Marble Glossy finish



Marmo Jura
Jura marble

LAMINATO SP. 4 - 6 CM. BORDO UNICOLOR / LAMINATE 4 - 6 CM THICK SINGLE-COLOR EDGE

TIPOLOGIA PROFILO / PROFILE TYPE

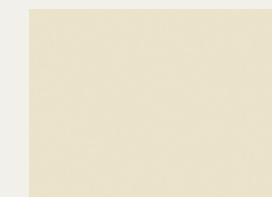


Profilo Alluminio o Bordo pari
Aluminum Profile or Even Edge

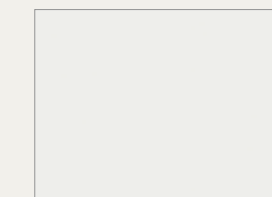
COLORI LAMINATO / LAMINATE COLORS



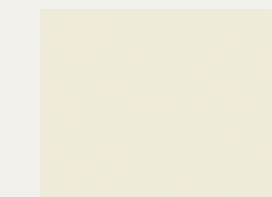
Moka - Mocha



Sabbia - Sand



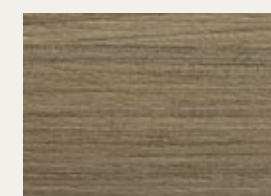
Bianco - White



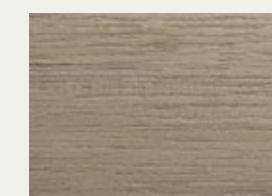
Avorio - Ivory



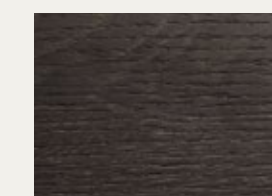
Grafite - Graphite



Olmo Mercurio finitura ALEVÈ
Mercurio Elm ALEVÈ finish



Olmo Bianco finitura ALEVÈ
White Elm ALEVÈ finish



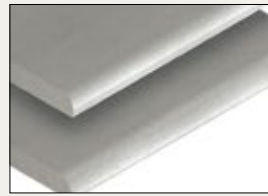
Rovere Barrique finitura ALEVÈ
Barrique Oak ALEVÈ finish



NERO finitura PIETRA
BLACK STONE finish

OKITE / OKITE

TIPOLOGIA PROFILI / TYPE PROFILES



Profilo F
F profile

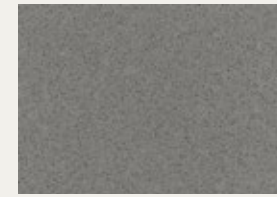
COLORI OKITE / OKITE COLORS



Bianco Carrara - Carrara white



Grigio - Grey



Grigio Nordico - Nordic gray



Crema Botticino - Botticino cream



Crema Marfil - Marfil cream



Gold Stone



Marron Emperador



Nero Etna - Etna Black



Bianco Cortina - Cortina White



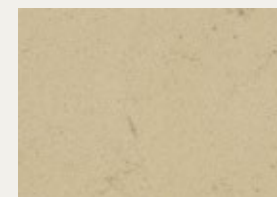
Nero Assoluto - Absolute Black



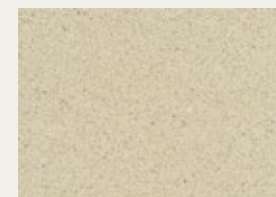
Piazza del campo



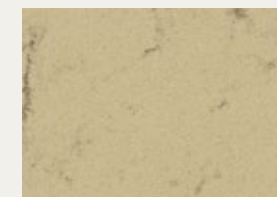
Grigio Stromboli - Stromboli Gray



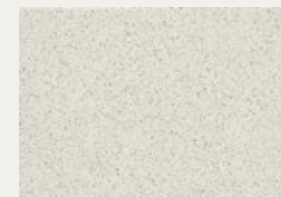
Paestum



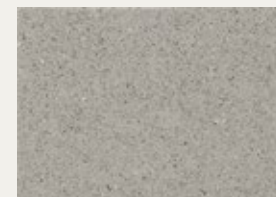
Roman Stone



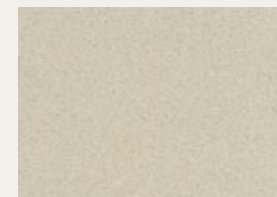
Jerusalem Stone



Bianco - White



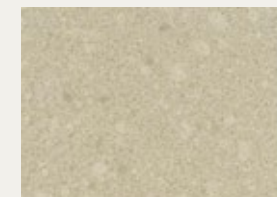
Grigio Chiaro - Light Gray



Crema - Cream



Bianco Assoluto - Absolute White



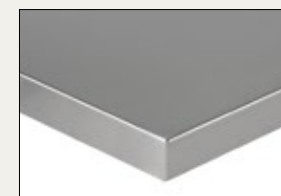
Beige Royal

INOX / STAINLESS STEEL

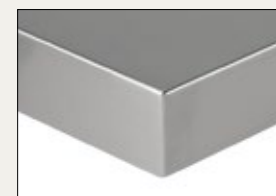
PROFILO INOX / STAINLESS STEEL PROFILE



SPessori DISPONIBILI / AVAILABLE THICKNESS



Spessore 3 cm - 3 cm thick



Spessore 6 cm - 6 cm thick



Spessore 10 cm - 10 cm thick

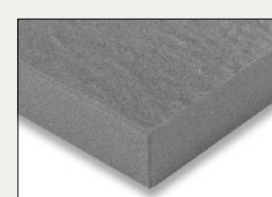
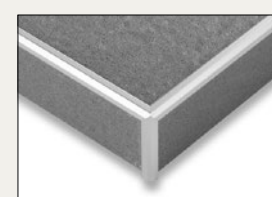
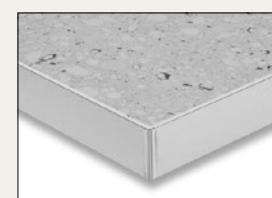
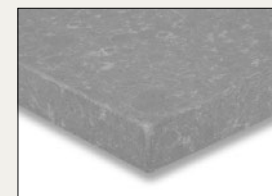
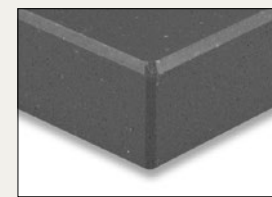
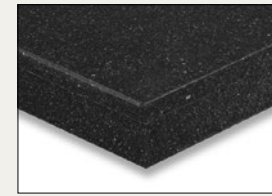
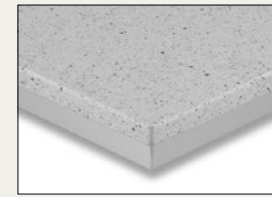


Spessore 15 cm - 15 cm thick

PIANI DI LAVORO / WORKING SURFACES

QUARZO / QUARZ

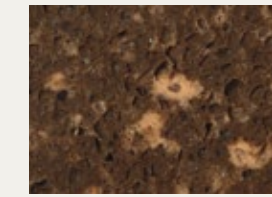
TIPOLOGIA PROFILO / PROFILE TYPE



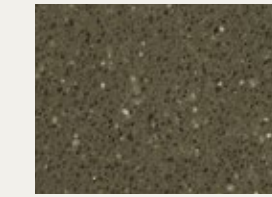
COLORI QUARZO / QUARZ COLOR



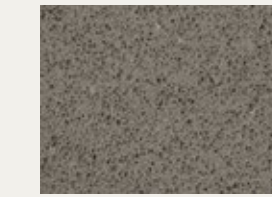
Graniglia grigio - Grey grit



Graniglia marrone - Brown grit



Grigio fango - Mud Grit



Titanium - Titanium



Beige duna - Dune beige



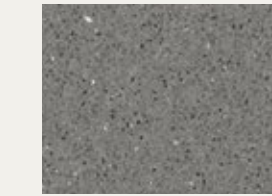
Bianco paloma - Paloma white



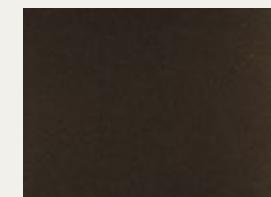
Bianco Sariba - Sariba white



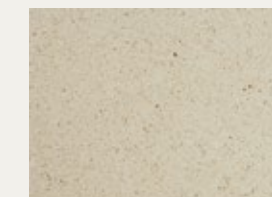
Grigio cenere - Ash grey



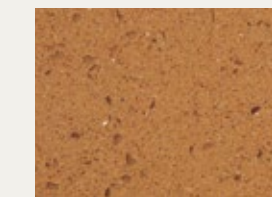
Grigio Serena - Serena grey



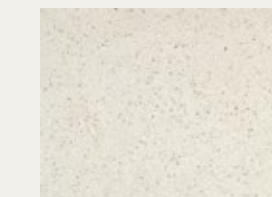
Otello



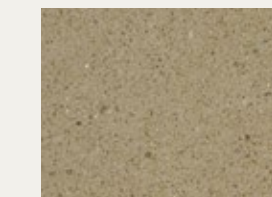
Beige Arena



Corniola - Cornelian



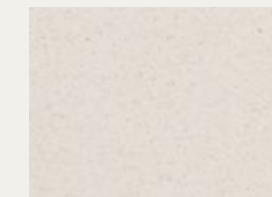
Diamante - Diamond



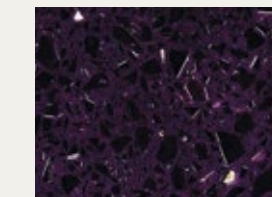
Maron canela



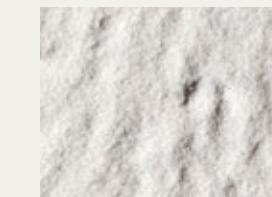
Nero S.M. - S. M. black



White sand



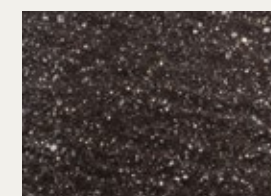
Starlight Ca' Pisani



Spacco diamond - Diamond Cleft



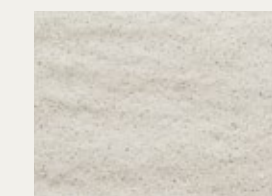
Spacco grigio - Grey cleft



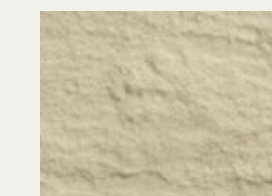
Spacco porfirico
Porphy-colour work



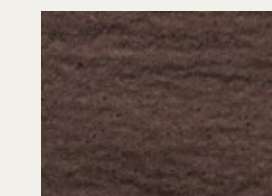
Porfirico lucido
Bright porphyry colour



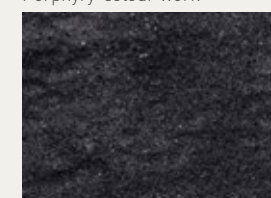
Spacco bianco - White Cleft



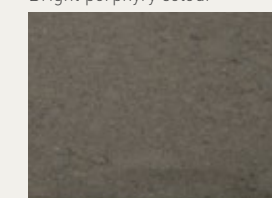
Spacco beige - Beige cleft



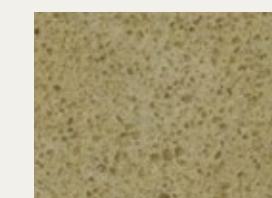
Spacco marrone - Brown cleft



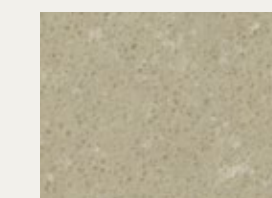
Spacco nero - Black cleft



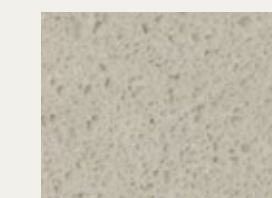
Grey amazon leather



Viturio Sand Tatum



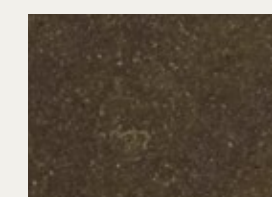
Cloudy Beige Tatum



Cloudy White Tatum



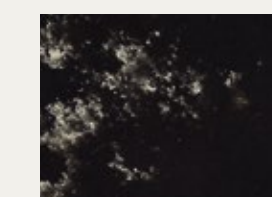
Veined Michelangelo



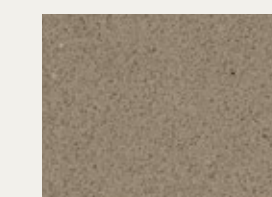
Veined Decò



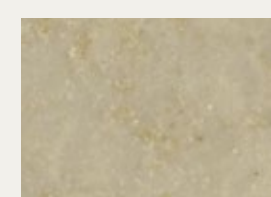
Veined Baroque



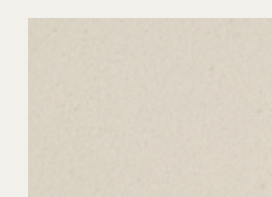
Veined Africa



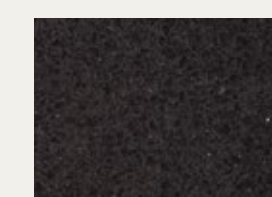
Veined Titan



Veined Cream



Bianco 1776 - White 1776



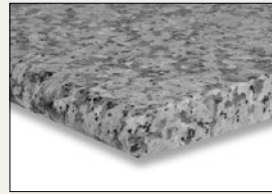
Crystal Pure Black



Grey Sand Ma Lucido
Polished Grey Sand Ma

MARMO SP. 3 CM. / MARBLE 3 CM THICK,

TIPOLOGIA PROFILO / PROFILE TYPE



COLORI MARMO / MARBLE COLOR



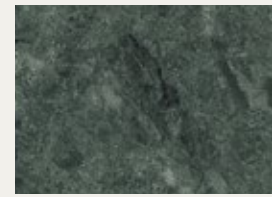
Bianco Carrara - Carrara white



Arabescato - Arabesqued



Calacatta



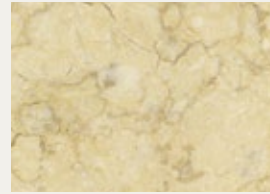
Verde Guatemala



Travertino



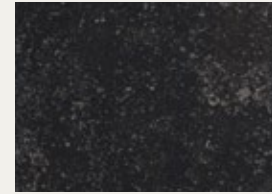
Giallo ocre satin
Yellow ocher satin



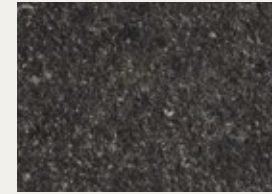
Sahara gold
(satinato - satin)



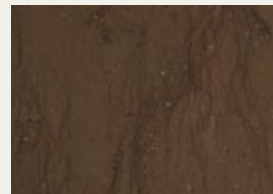
Petit granit
(lucido - gloss)



Petit granit
(levigato - smoothed)



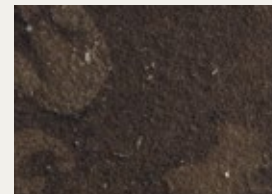
Petit granit (fiammato patinato - iridescent patina)



Kaeser brown
(lucido - gloss)



Kaeser brown
(levigato - smoothed)



Kaeser brown (fiammato patinato - iridescent patina)



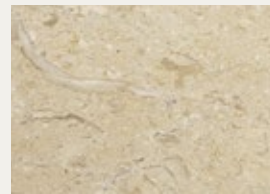
Grabla
(levigato - smoothed)



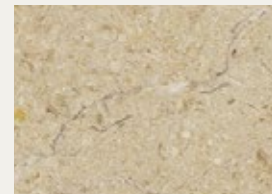
Grabla velvet



Sea shore
(lucido - gloss)



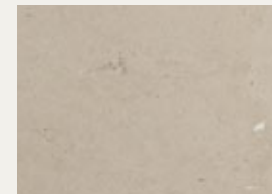
Sea shore
(levigato - smoothed)



Sea shore velvet



Pietra del Carso
(levigato - smoothed)



Pietra del Carso velvet



Mizar grey
(lucido - gloss)



Mizar grey
(levigato - smoothed)



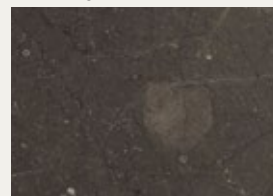
Mizar grey (fiammato patinato - iridescent patina)



Ariel grey
(lucido - gloss)



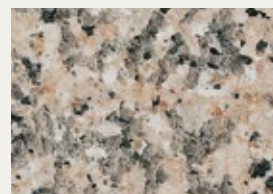
Ariel grey
(levigato - smoothed)



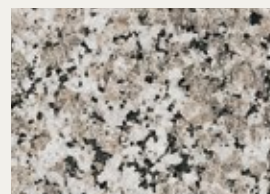
Ariel grey velvet

GRANITO SP. 3 CM / GRANITE 3 CM THICK

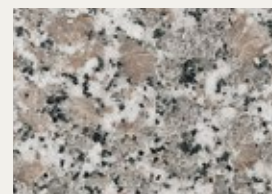
COLORI GRANITO / GRANITE COLORS



Granito rosa - Pink granite



Granito grigio - Grey granite



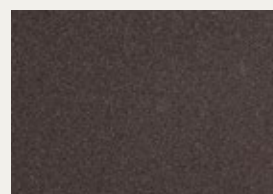
Granito ghiandone grigio
Grey Ghiandone granite



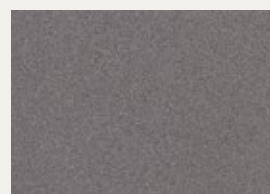
Granito bianco sardo
Sardinian white granite



Nero assoluto fiammato patinato
Absolute black iridescent patina



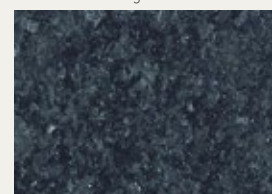
Toak purple
(lucido - gloss)



Toak purple
(levigato - smoothed)



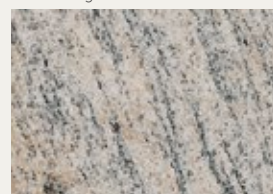
Toak Purple (fiammato patinato - iridescent patina)



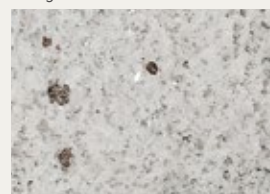
Granito nero africa



Granito giallo veneziano
Venetian yellow granite



Granito River rosa
River pink granite



Granito kashmir white
Kashmir white granite



Nero assoluto lucido
Absolute black gloss

**ART DECOR
LE CERAMICHE**

TIPOLOGIA PROFILO / PROFILE TYPE



COLORI / COLORS



Ceramica Pietra d'Assisi Beige
Beige Pietra d'Assisi ceramics



Ceramica Pietra d'Assisi Ocra
Ochre Pietra d'Assisi Ceramics



Ceramica Pietra d'Assisi Rosso
Red Pietra d'Assisi Ceramics

LE PIASTRELLE

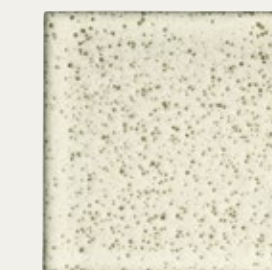
TIPOLOGIA PROFILO / PROFILE TYPE



COLORI / COLORS



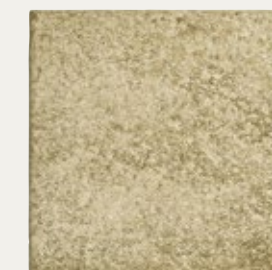
Piastrella Bianco Rustico
Rustic White Tiles



Piastrella Sale e Pepe
Salt and Pepper Tiles



Piastrella Muro Antico
Antique Wall Tiles



Piastrella Canapa
Hemp Tiles



Piastrella Vulcano
Lava Tiles

I SASSI (disponibili in finitura Spazzolata o Antichizzata - available in Brushed or Antiqued finish)

TIPOLOGIA PROFILO / PROFILE TYPE



Profili per Finitura Antichizzata
Antiqued finish type of edges

COLORI / COLORS



Sasso Botticino
Botticino Stone



Sasso Rosa Perlino
Pearl Pink Stone



Sasso Giallo Reale
Royal Yellow Stone



Sasso Scabas (Solo finitura antichizzata)
Scabas Stone (Only antiqued finish)



Profili per Finitura Spazzolata
Brushed finish type of edges



Sasso Travertino Noce
Walnut Travertine Stone



Sasso Rosso Verona
Verona Red Stone

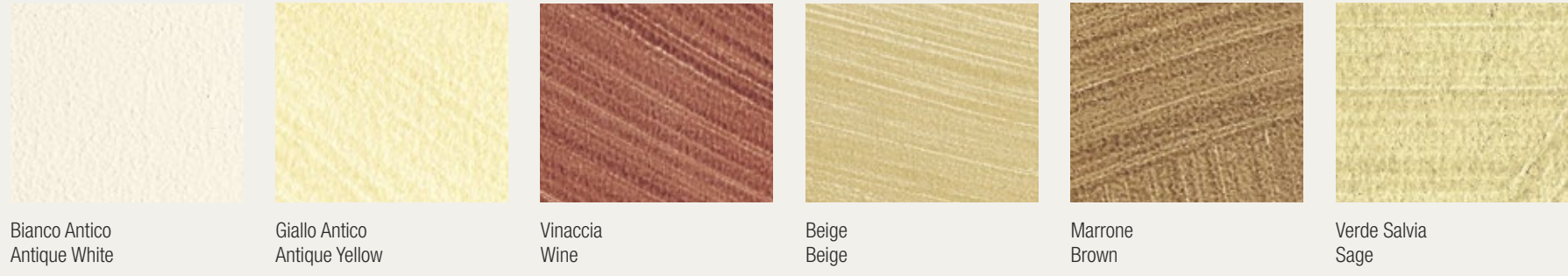


Sasso Rosso Verona
Verona Red Stone



Sasso Mixage (50x50cm.)
Mixage Stone (50x50cm.)

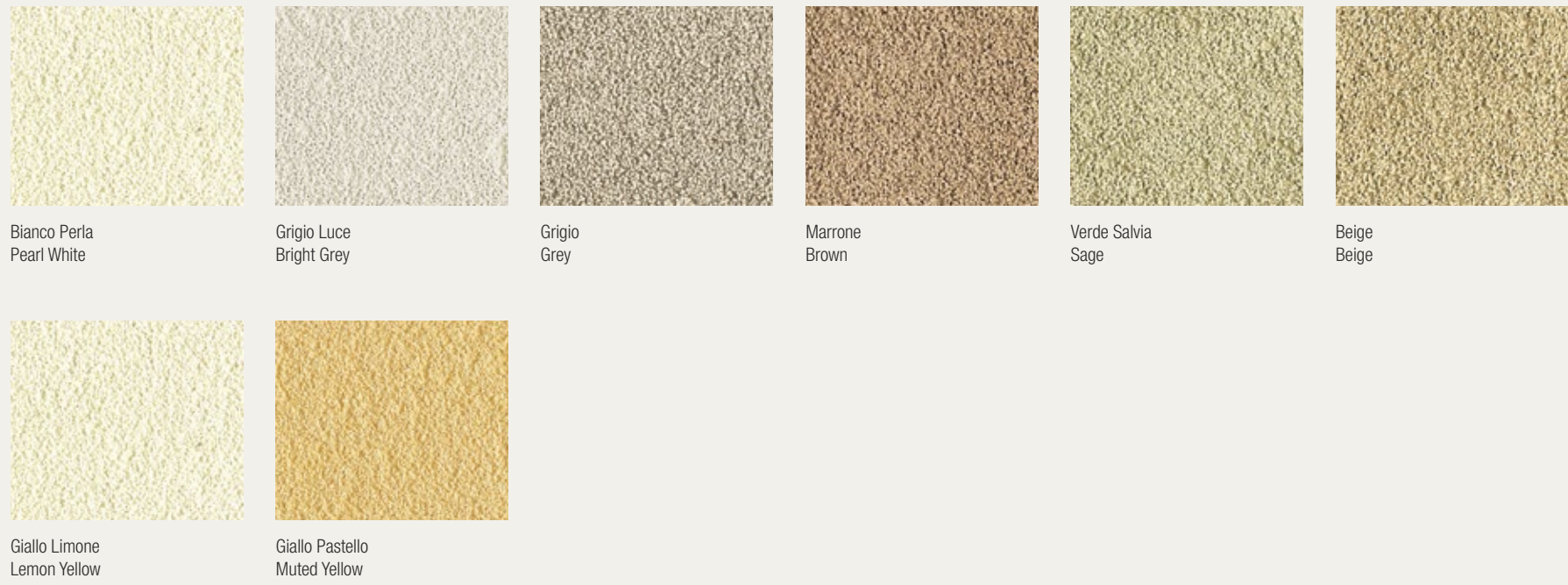
ART DECOR I DIPINTI
SERIE PICASSO / PICASSO SERIES



SERIE CANALETTO VELATO CANALETTO SERIES



SERIE MICHELANGELO MICHELANGELO SERIES



ART DECOR I DIPINTI
SERIE CASA DEI SOGNI CERASO DREAM HOUSE SERIES WAXEDO



SERIE SPIRITO LIBERO FREE SPIRIT SERIES





G* GRASS

IL PROGRAMMA COMPLETO
DI CASSETTI VERSATILE
DAL DESIGN ESCLUSIVO,
UNICO E FUNZIONALE
/ THE COMPLETE PROGRAM
OF DRAWERS VERSATILE
DESIGN EXCLUSIVE,
UNIQUE AND FUNCTIONAL

Il passaggio a GRASS ha consentito di proporre l'intera gamma di elementi estraibili della STOSA sotto un'unica configurazione di sponde carenate che, oltre a soddisfare il fattore estetico, con le eleganti finiture in acciaio, conferiscono anche al prodotto di base un elevato standard qualitativo, il tutto abbinato ad una estrema coerenza in tutta la linea di prodotti siano essi standard che ridotti, basata sull'estrema scorrevolezza, resistenza e stabilità delle guide.

The change to GRASS permit to the entire range of STOSA pullout elements to be offered in a single configuration of covered sides which, as well as meeting aesthetic requirements, with elegant finishes in steel, give the basic product a high quality standard, all with extreme consistency in the whole line of standard and reduced products, based on the extreme smoothness, rigidity and stability of the runners.



SPONDE STANDARD
Sponde scatolate in acciaio.
Il sistema completo, preciso e personalizzato.

STANDARD SIDES
Box-type steel sides.
The complete, careful and custom system.



SPONDE INOX OPTIONAL
Sponde scatolate in acciaio inox dal design elegante, ed eccellenti proprietà di scorrimento.

OPTIONAL STAINLESS STEEL SIDES
Box-type stainless steel sides featuring an elegant design, and excellent sliding.



GUIDE
Sistema di apertura, ad estrazione totale. Standard - Ammortizzate - Push-pull.

RUNNERS
Full-extraction opening system. Standard - Damped - Push-pull.



ACCESSORI
Antisgancio di serie: su tutta la gamma, integrabile a richiesta col sistema di sicurezza apertura per bambini.

ACCESSORIES
Safety device provided standard: for all the range, on request it can be integrated with the child safety opening system.



Stosa S.p.A.

STAB., SEDE AMM.VA E RECAPITO POSTALE:
S.S. Cassia, Km. 149,5
53040 Radicofani (SI) Italy

GPS:
N 42° 53' 50,6"
E 11° 45' 53,5"

INFO:
tel. +39 0578 5711 r.a.
fax +39 0578 50088

INFO LINE:
840 000 691

